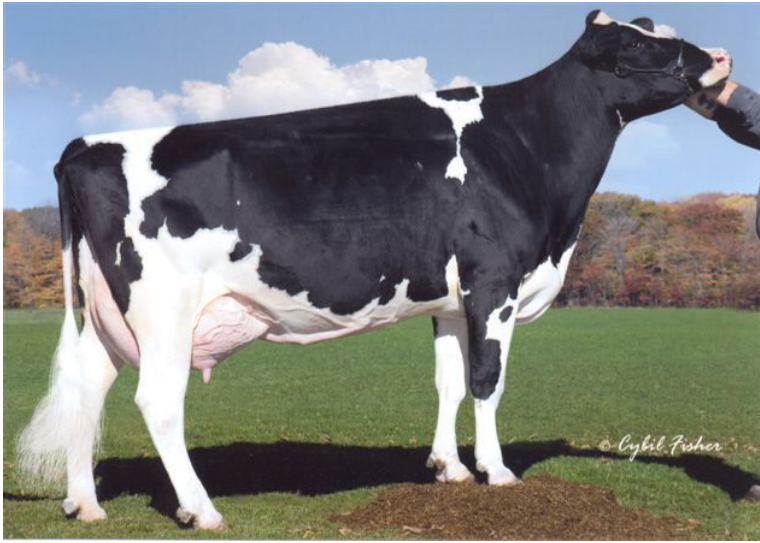


Jauquet-Long Shottle Ada

Shottle x EX-92 Durham x Shoremar S Alicia EX-97 x EX-94 Starbuck



BKB Amanda EX-92



Shoremar S Alicia EX-97 3E

USA 137364004

Birth.date. 03-10-2006

USA 07/05 +747M +45F +29P PTPI +1804

USA 07/05 +2.80T +2.33UDC +1.90FLC

Picston Shottle

BKB Amanda TV TL EX-92

2.03 365d 15.345 4.4 682 3.4 529

4.03 365d 18.815 5.0 920 3.3 616

USA 07/05 CTPI +1755

Regancrest Elton Durham

Shoremar S Alicia EX-97 3E

2.02 365d 13.126 3.8 497 3.3 431

4.01 342d 14.370 4.2 598 3.3 470

5.02 305d 13.826 4.2 574 3.5 481

6.10 305d 14.057 4.3 609 3.3 469

8.11 305d 15.032 4.3 647 3.3 489

Donnandale Skychief

Aitkenbrae Starbuck Ada EX-94 2E ^{DOM}

2.05 362d 11.340 3.6 412 3.4 383

3.07 365d 11.084 3.7 408 3.4 372

5.06 356d 13.633 3.5 473 3.5 476

Sire: Starbuck

- Superb Shottle heifer out of BKB Amanda EX-92
- This is one of the few CVM- and BL- free descendents from this family
- Grand dam is the World Champion Shoremar S Alicia EX-97! Alicia is still alive!
- Alicia won the Royal Show Toronto in 2000, Class winner in Madison 2000 and she won the Holstein International World Champions title
- Alicia won 4 All-American and Reserve All-American titles
- Maternal sister of Amanda is the high type bull BKB Affirmed @ ABS
- Grand dam is the great brood cow Starbuck Ada; plenty EX offspring and 2 All-American awards!

DIAMOND GENETICS

donoren - embryo's - stieren

Van Keppelmarke 22 - 8016 GK Zwolle - The Netherlands
 Cell. Jan de Vries +31 (0)6 26250502 - Office. +31 (0)38 4606922
 Email. sales@diamond-genetics.nl - www.diamondgenetics.nl